

PARTIEL TERMINAL SECOND SEMESTRE4. Les trois gammes de Si mineur et leur nom1) harmonique2) Mélodique ascendant3) Mélodique descendant5. Les tons voisins de Do # mineur

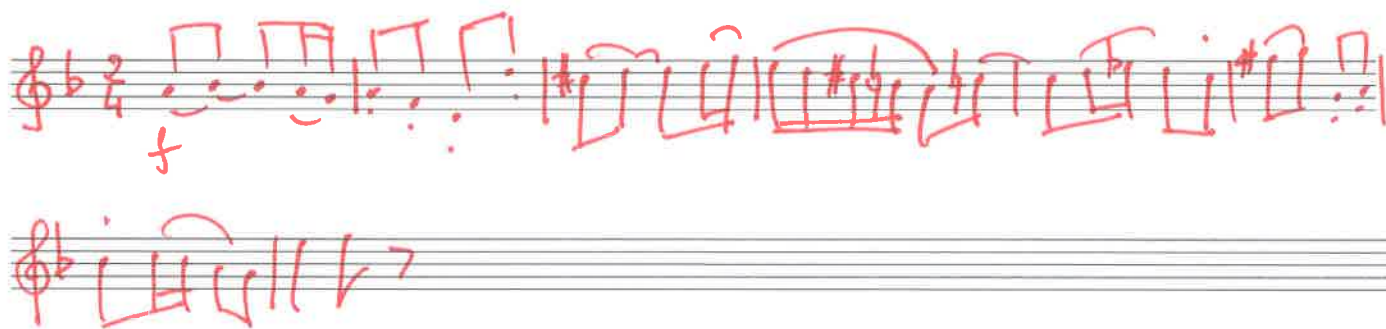
<u>Altérations</u>	<u>Degrés</u>		
5#	V	Sol# m	Si M
4#	I	<u>Do # mineur</u>	Mi M
3#	IV	Fa# m	La M

PARTIEL TERMINAL SECOND SEMESTRE

6. Transposez ce thème une tierce mineure au dessus.



Nouvelle tonalité ;.....Armure :



AUDITION 1 - Partiel Mai 2021

DPM 2 voix

Menuetto

A. Corelli
(1653 - 1713)

① Menuetto

Hautbois

Basson

The first system of the Minuet is written for Hautbois and Basson. The key signature is one sharp (F#) and the time signature is 3/4. The Hautbois part begins with a quarter note G4, followed by quarter notes A4, B4, and C5. The Basson part begins with a quarter note G3, followed by quarter notes F#3, G3, and A3. The system consists of four measures.

Hb.

Bsn.

The second system of the Minuet continues the piece. The Hautbois part has a quarter note G4, quarter notes A4, B4, and C5, followed by a quarter note D5 and an eighth note E5. The Basson part has a quarter note G3, quarter notes F#3, G3, and A3, followed by a quarter note B3 and a quarter note C4. The system consists of four measures.

Hb.

Bsn.

The third system of the Minuet continues the piece. The Hautbois part has a quarter note G4, quarter notes A4, B4, and C5, followed by a quarter note D5 and an eighth note E5. The Basson part has a quarter note G3, quarter notes F#3, G3, and A3, followed by a quarter note B3 and a quarter note C4. The system consists of four measures.

Hb.

Bsn.

The fourth system of the Minuet concludes the piece. The Hautbois part has a quarter note G4, quarter notes A4, B4, and C5, followed by a quarter note D5 and an eighth note E5. The Basson part has a quarter note G3, quarter notes F#3, G3, and A3, followed by a quarter note B3 and a quarter note C4. The system consists of four measures.