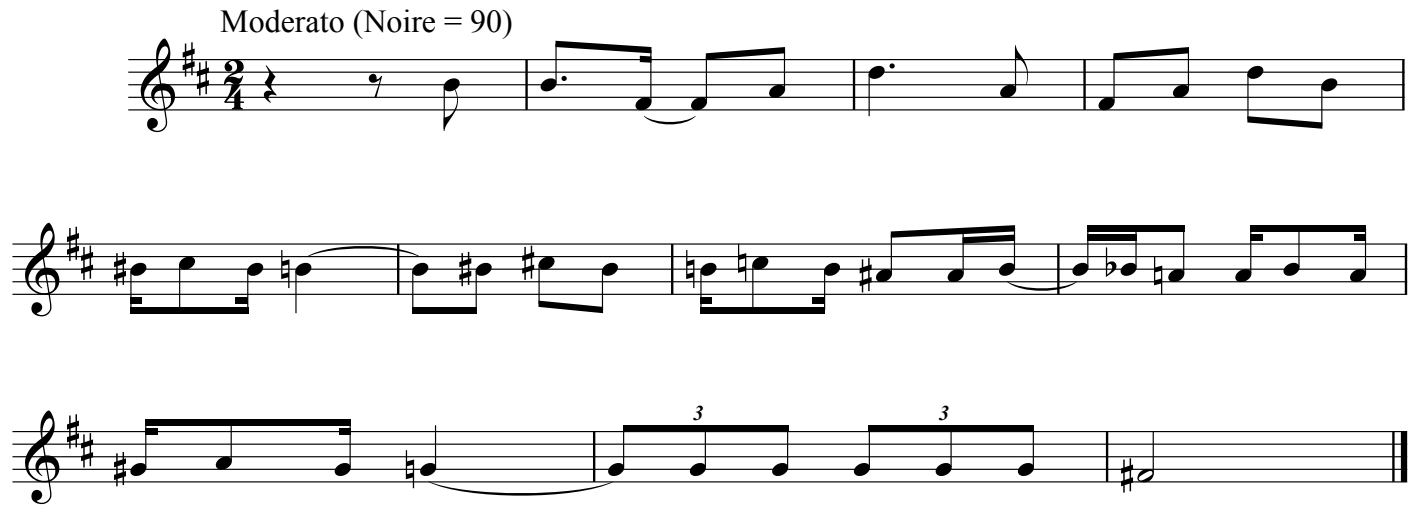


INTONATION 2
Partiel Semestre 1 - Janvier 2017

I- Déclamez ce texte sur onomatopées.

Moderato (Noire = 90)



L Bernstein, *Candide*

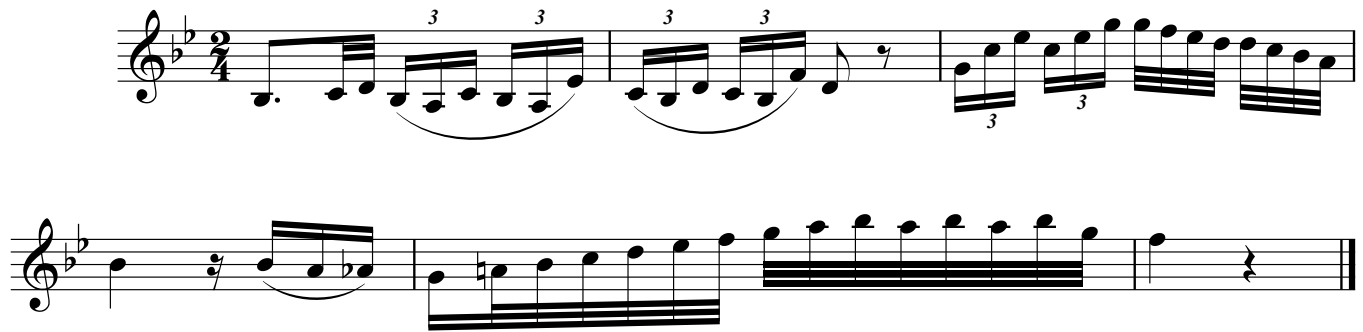
II- Déclamez ce texte sur le nom des notes en battant simultanément une pulsation stable à la main gauche et les petites valeurs complémentaires à la main droite.

Vivace



A. Corelli, *Sonate opus V (11)*

III- Déclamez ce texte sur le nom des notes.



W.A. Mozart, *Sonate en Sib M KV 281*

IV- Lecture de Partition (préparée)

- C. Debussy, *Quatuor à cordes*, III- Andantino doucement expressif
- ou
- J. Brahms, *Sérénade n°1 en ré majeur opus 11*, III- Menuetto

V- Thèmes à transposer dans tous les tons

- L. van Beethoven, *Symphonie n°7 en La majeur opus 92*, II-Allegretto
- F. Schubert, *Symphonie n°4 en Ut mineur D. 417*, II- Andante
- F. Schubert, *Rosamunde*, Entracte de l'Acte III

VI- Déchiffrage chanté (sur le nom des notes).

F. Schubert, *An Mignon opus 19 n°2*

VII- Chants du semestre (l'un des six, tiré au sort)

- W. A. Mozart, *Ridente la calma*
- F. Schubert, *Der Müller und der Bach*
- R. Schumann, *Du ring an meinem Finger*
- J. Brahms, *Sapphische Ode*
- J. van Heusen, *Darn that dream*
- A.C. Jobim, *Modinha*

Intonation 2 - Thèmes transposés Semestre 1

L. van Beethoven
Symphonie n°7 en la majeur opus 92, II Allegretto

Measures 1-4 of the musical score. The score is in 2/4 time and consists of three staves: Treble, Bass, and Bass. The melody in the Treble staff begins with a half note G4, followed by a half note A4, and then a quarter note B4. The Bass staff provides a harmonic accompaniment with quarter notes G2, A2, and B2. The piece is in the key of A major.

Measures 5-8 of the musical score. The Treble staff continues the melody with a quarter note C5, a quarter note D5, and a quarter note E5. The Bass staff continues with quarter notes C2, D2, and E2. The melody in the Treble staff concludes with a quarter note F#5.

Measures 9-12 of the musical score. The Treble staff begins with a half note G4, followed by a half note A4, and then a quarter note B4. The Bass staff provides a harmonic accompaniment with quarter notes G2, A2, and B2. The piece is in the key of A major.

Measures 13-16 of the musical score. The Treble staff continues the melody with a quarter note C5, a quarter note D5, and a quarter note E5. The Bass staff continues with quarter notes C2, D2, and E2. The melody in the Treble staff concludes with a quarter note F#5.

F. Schubert,
Symphonie n°4 en Ut mineur D.417, II- Andante

17

23

29

35

Musical score for the first piece, measures 17-40. The score is written in treble clef with a key signature of three flats (B-flat, E-flat, A-flat) and a common time signature. It consists of four staves of music. The first staff starts at measure 17, the second at 23, the third at 29, and the fourth at 35. The music features a melodic line with various note values, including quarter, eighth, and sixteenth notes, often grouped with slurs and ties. The piece concludes with a double bar line at the end of the fourth staff.

F. Schubert,
Rosamunde, Entracte de l'Acte III

41

pp

47

53

mf

59

f *pp*

65

Musical score for the second piece, measures 41-70. The score is written in treble clef with a key signature of three flats (B-flat, E-flat, A-flat) and a common time signature. It consists of five staves of music. The first staff starts at measure 41 and includes the dynamic marking *pp*. The second staff starts at measure 47. The third staff starts at measure 53 and includes the dynamic marking *mf*. The fourth staff starts at measure 59 and includes the dynamic markings *f* and *pp*. The fifth staff starts at measure 65. The music features a melodic line with various note values, including quarter, eighth, and sixteenth notes, often grouped with slurs and ties. The piece concludes with a double bar line at the end of the fifth staff.

18 An Mignon

Goethe

49

Op. 19. N^o 2

98
Singstimme
Orig. G moll

Etwas geschwind

Pianoforte

Ü - ber Tal und Fluß ge -
Kaum will mir die Nacht noch

tra - gen, zie - het rein - der Son - ne Wa - gen. Ach! sie regt in
from - men, denn die Träu - me sel - ber kom - men nun in trau - ri -

ih - rem Lauf, so wie dei - ne, mei - ne Schmerzen tief im Her - zen
ger Ge - stalt; und ich füh - le die - ser Schmerzen still im Her - zen

im - mer Mor - gens wie - der auf, im - mer Mor - gens wie - der
heim - lich bil - den - de Ge - walt, heim - lich bil - den - de Ge -

auf.
walt.

dimin.

subito

Schon seit man - chen schö - nen Jah - ren, seh ich un - ten Schif - fe
 Schön in Klei - dern muß ich kom - men, aus dem Schrank sind sie ge -

pp legato

fah - ren, je - des kommt an sei - nen Ort; a - ber, ach! die
 nom - men, weil es heu - te Fest - tag ist; nie - mand ah - net,

ste - ten Schmer - zen, fest im Her - zen, schwim - men
 daß von Schmer - zen Herz im Her - zen grim - mig

fp

nicht im Stro - me fort, schwim - men nicht im Stro - me
 mir zer - ris - sen ist, grim - mig mir zer - ris - sen

fp

fort.
 ist.

dimin.

Heim-lich muß ich im - mer wei - nen, a - ber freund-lich kann ich

pp legato

schei - nen, und so-gar ge - sund und rot; wä - ren töd - lich

die - se Schmer - zen mei - nem Her - zen, ach! schon

fp

lan - ge wär ich tot, ach! schon lan - ge wär ich

fp

tot.

dimin.